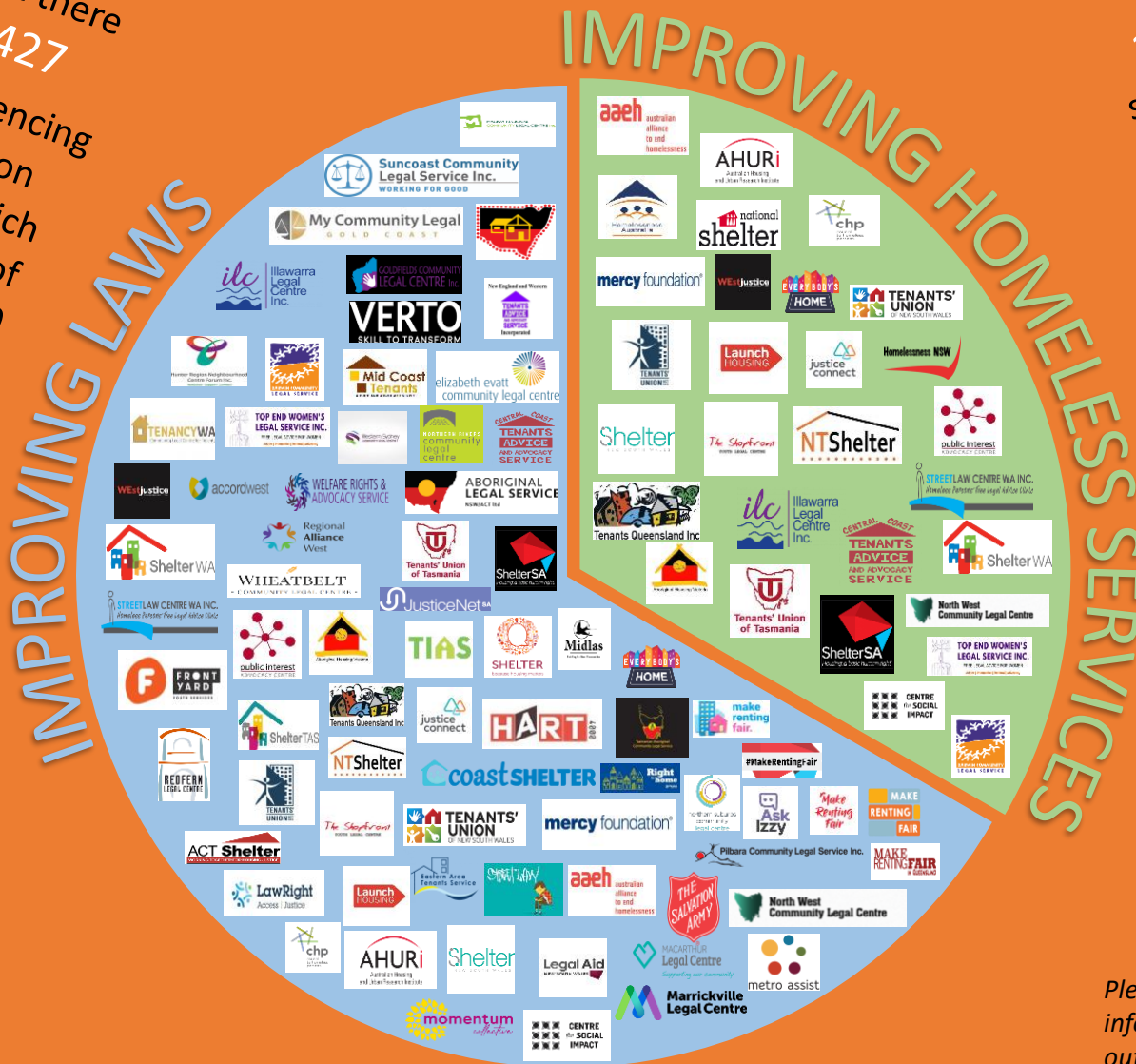


The 2016 Census estimated that there were 116,427 people experiencing homelessness on Census night, which represents a rate of homelessness of 50 persons per 10,000 people.

On Census night in 2016, young people aged under 25 years represented 39 per cent of homeless people in Australia



In 2015-16, approximately 279 000 people sought assistance at specialist homeless services across Australia, equivalent to 1 in 85 Australians.

Out of 279,000 people who received specialist homelessness assistance in 2015-16, 38 per cent were seeking support due to domestic and family violence.

Please see the mapping table for information on the priorities outlined in the Justice Report, the organisations addressing each